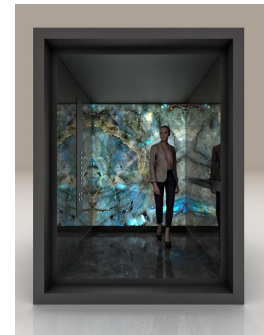


# DUPLEX 4 camere, ansamblu nou - Primaverii/ Herastrau

569,000 € + 19% TVA



- SC: 394mp
- SU: 198mp
- Terasa: 196mp
- 2 bai

## Facilitati:

- 4 camere
- Aer conditionat
- Centrala imobil
- Incalzire prin pardoseala
- An constructie 2017

## Descriere:

Acest duplex este pozitionat intr-un complex rezidential exclusivist, unic in Bucuresti, adresat unei comunitati formate din expati, oameni de afaceri, reprezentanti multinationale, reprezentanti diplomatici.

Complexul beneficiaza de un concept arhitectural si de facilitati de lux - acces privat pentru rezidenti, parcare subterana, gradina interioara amenajata, finisaje de lux. Imobilul este pozitionat in imediata proximitate a parcului Herastrau, a cartierului rezidential Primaverii si a zonei de afaceri Floreasca/ Promenada.

## Vecinatati:

- Parcul Herastrau - 250m
- Metrou Aviatorilor / Charles de Gaulle - 400m
- Promenada Mall - 500m
- Ambasada Chinei / Sos. Nordului - 250m

- Finisaje peste media pietei:
- incalzire in pardoseala



Oana Popescu

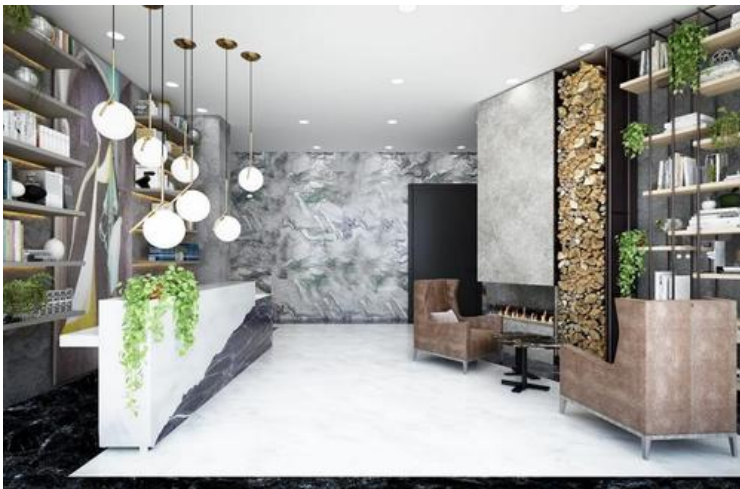
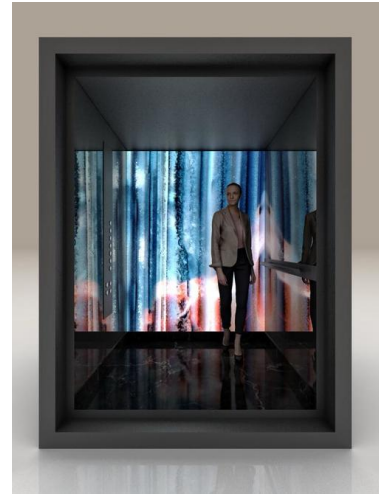
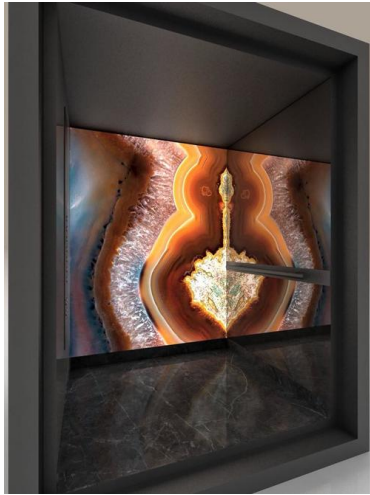
Associate Residential Capital  
Markets

0722640069

[oana.popescu@crosspoint.com.ro](mailto:oana.popescu@crosspoint.com.ro)

[www.crosspoint-imobiliare.ro](http://www.crosspoint-imobiliare.ro): CP440277

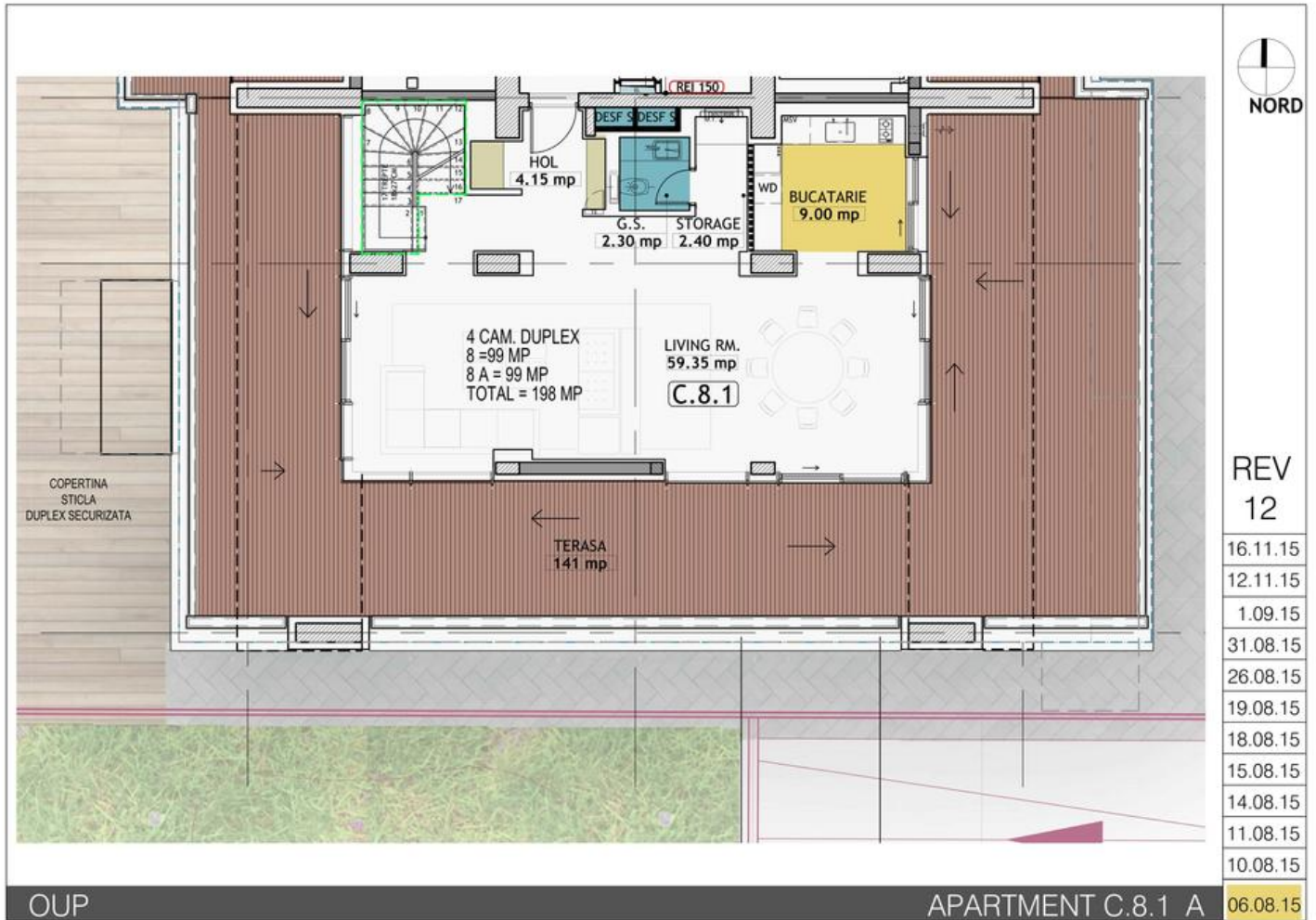
## Poze



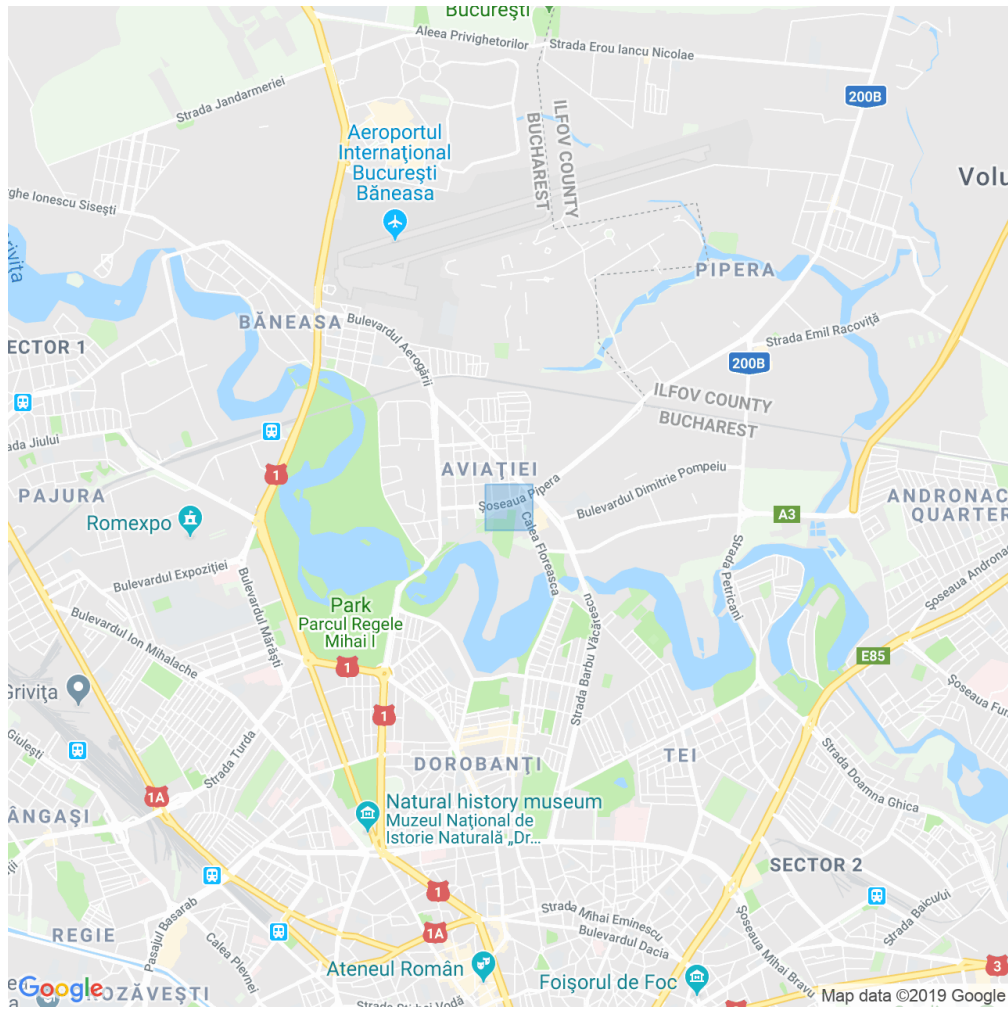
## Poze



# Schita



## Localizare



## Vecinatati

Parcul Herastrau, Parcul Bordei, Lacul Floreasca